



WOOD - PAWCATUCK  
Wild and Scenic Rivers

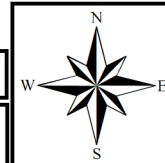
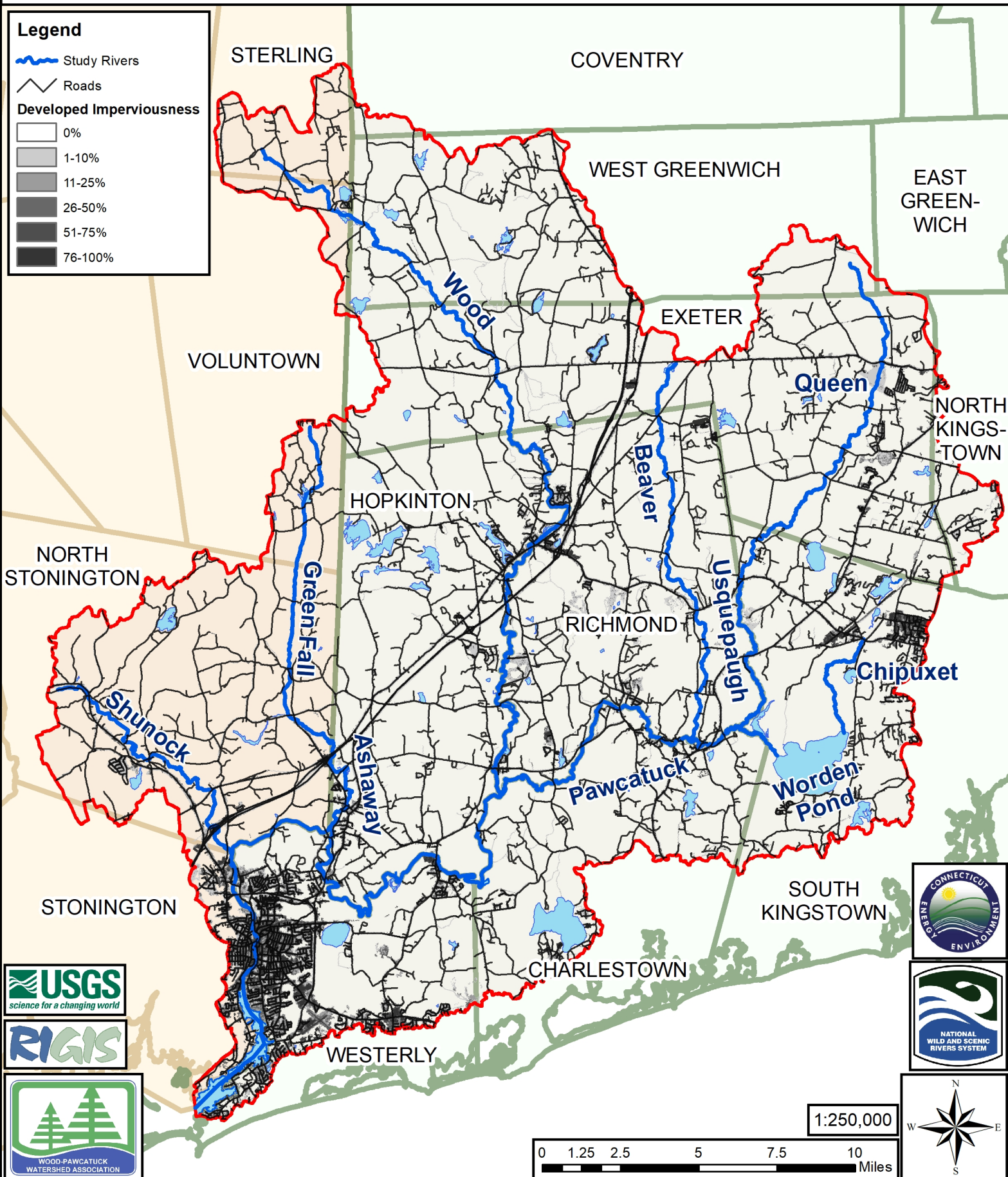
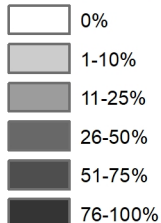
# Wood-Pawcatuck Watershed Impervious Cover

## Legend

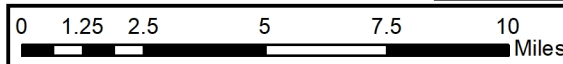
Study Rivers

Roads

### Developed Imperviousness



1:250,000



The locations of feature boundaries shown on this map are intended for planning purposes only. This map is not intended for legal, engineering, or survey purposes. Funding for this project was provided by the National Park Service and the National Wild and Scenic Rivers System. Map Prepared By: Elise Torello, March 2018